

The Secret Refuge

Our plots

La Zagaleta



“To whom you reveal your secret, you give your freedom.”

- Fernando de Rojas. -



La Zagaleta is the most exclusive residential enclave in Southern Europe.

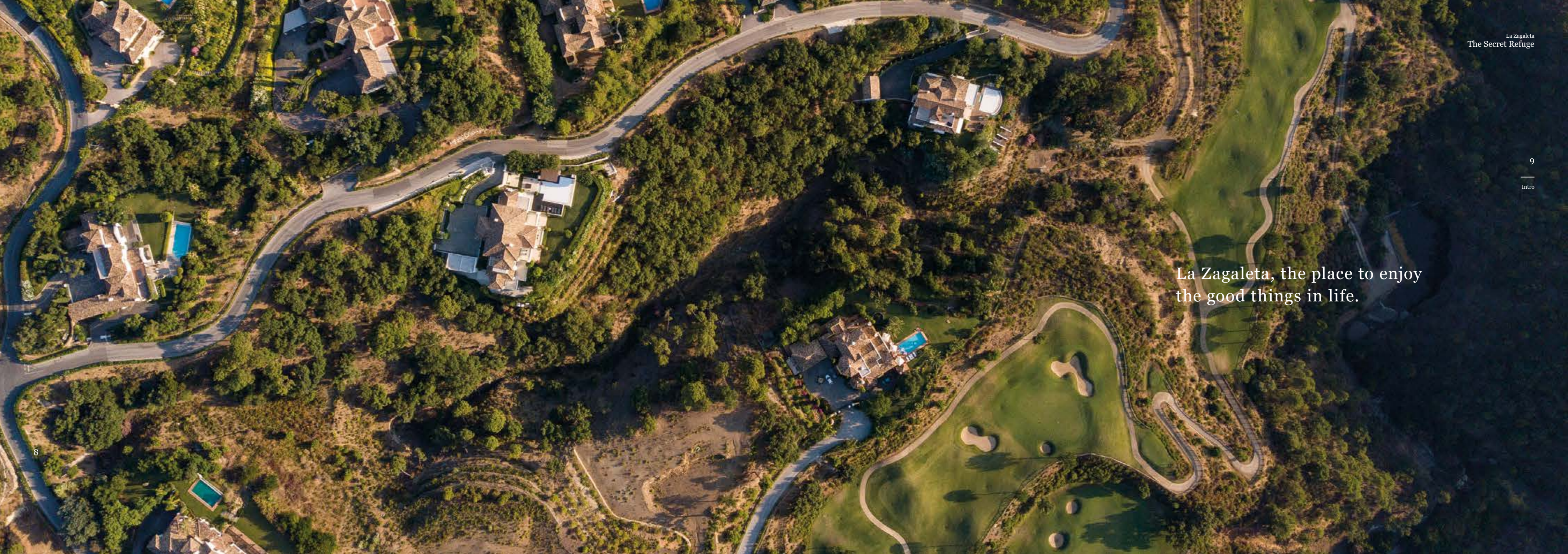
A place imbued with the beauty of nature, with homes built from the materials that dreams are made of. An environment where architectural simplicity lives in harmony with nature in its purest state.

A true delight for all your senses.

Discover the place where silence, luxury, privacy and freedom reign. Learn something new, and refine the things you already know.

Take your time, imagine the perfect place to find yourself.

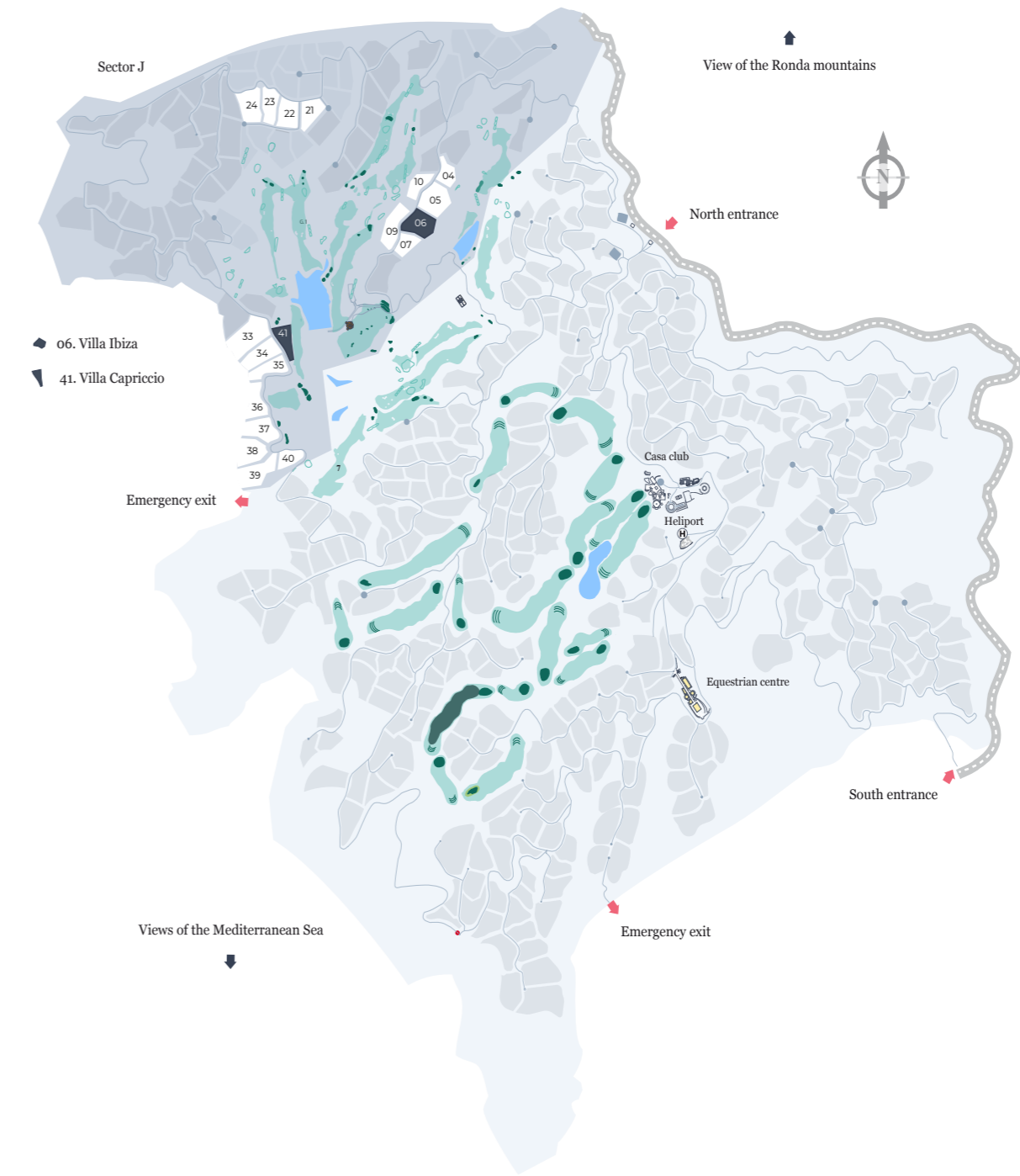
A place to strike the delicate balance between being and having.



La Zagaleta, the place to enjoy
the good things in life.

La Zagaleta. The best kept secret.

A private residential area with luxury villas, created with a revolutionary idea in mind: to integrate homes of extraordinary quality, design and sustainability into an environment of unparalleled natural beauty.



A special microclimate with close to 300 days of sunshine a year to enjoy. A paradise in the mountains, caressed by the breeze of the Mediterranean Sea.



Close to the Málaga international airport, with excellent connections with Europe and the rest of the world. High-speed train to Madrid, London, Frankfurt, and Milan. Close to beaches. The Sierra Nevada Ski Resort is 2,5 hours by car.

Paradise is nestled in a privileged area, just ten minutes from Puerto Banús.

Stillness at home. Exquisite beaches, Michelin-starred restaurants, Marbella's exciting Nightlife and Puerto Banús, just ten minutes away. Málaga and its emerging cultural offer, less than an hour away. Direct access to the airport.



Feel the freedom to choose what is best for you.

The Secret Refuge



In La Zagaleta, homeowners enjoy completely personalized services that reveal our passion for detail. In 900 hectares of Mediterranean forest, there are two 18-hole golf courses, an equestrian centre, a private heliport, and tennis and padel courts. And at the Club House, a restaurant offering unforgettable dining experiences that will inspire even the most discerning of palates.

Enjoy total peace and quiet while playing your favourite sport.

With 36 Parkland holes, the Old and New golf courses of La Zagaleta are in a privileged location nestled amongst the pine forest from where you can absorb the magnificent views across the Mediterranean Sea.



The Old Golf Course.

Designed in 1991 by Bradford Benz and redesigned in 2016 by Marc Westenberg, this superb 18-hole course is carefully integrated into its natural surroundings, one of the project's primary objectives.

The New Golf Course.

This course was designed with a true challenge in mind. With services and facilities of an unprecedented level, La Zagaleta offers its members this second, exclusive par-70 course.

900

hectares of landscape



Live in a natural environment.

Walk through 900 hectares of Mediterranean forest tucked in between mountains, close to the highlands of Serrania de Ronda. Wake up every day to the sunrise. Be caressed by a gentle Mediterranean breeze, cooled by the mountains. Explore a privileged environment in complete freedom. Come face-to-face with deer and mouflon. Play on golf courses with contours inspired by their natural surroundings. Breathe fresh air in a lush landscape, dotted with natural lakes.

That is what living in a nature reserve is like.

6

paddocks

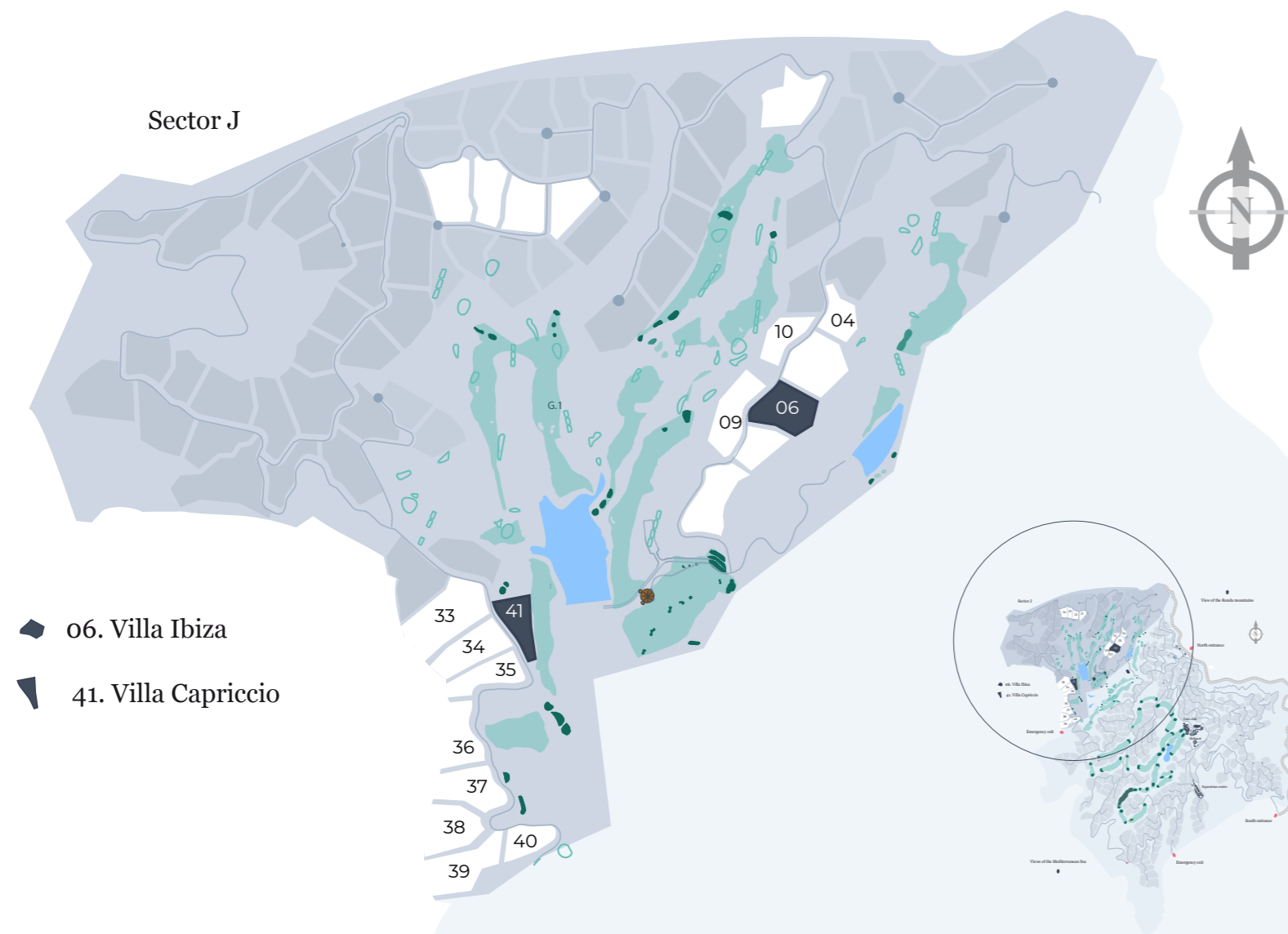
23

boxes-suite

Purebreds: feel the connection

EQUESTRIAN CENTRE

The stables of the Equestrian Centre offer 23 boxes-suite and 6 paddocks, where our grooms treat the horses with the utmost care.



Plot	Surface (m)	Buildable area (sqm)	Orientation	Views
J-4	5.025	753,75	South, southeast	Golf and valley
J-9	8.777	1.316,55	West	Golf and valley
J-10	5.217	782,55	West	Golf and valley
J-33	14.807	2.221,05	South, southwest	Sea, golf and valley
J-34	8.847	1.327,05	South, southwest	Golf and valley
J-35	6.841	1.026,15	South	Golf and valley
J-36	7.459	1.118,85	West	Golf and valley
J-37	8.871	1.330,65	West	Golf and valley
J-38	9.101	1.365,15	South	Golf and valley
J-39	9.370	1.405,5	South	Golf and valley
J-40	5.020	753	South	Golf and valley

25
Our plots

To know more
about our plots
[click here.](#)

Plot J.04

La Zagaleta / J.04 (sector J)

Clasificación	Villa
Sector	Sector J.
Plot(m)	5.025
Buildable área(sqm)	753,75



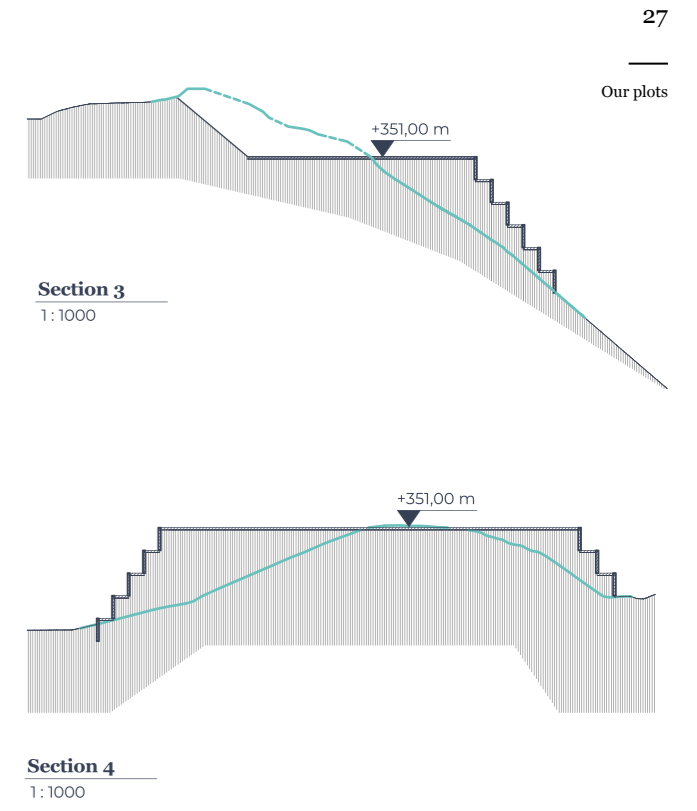
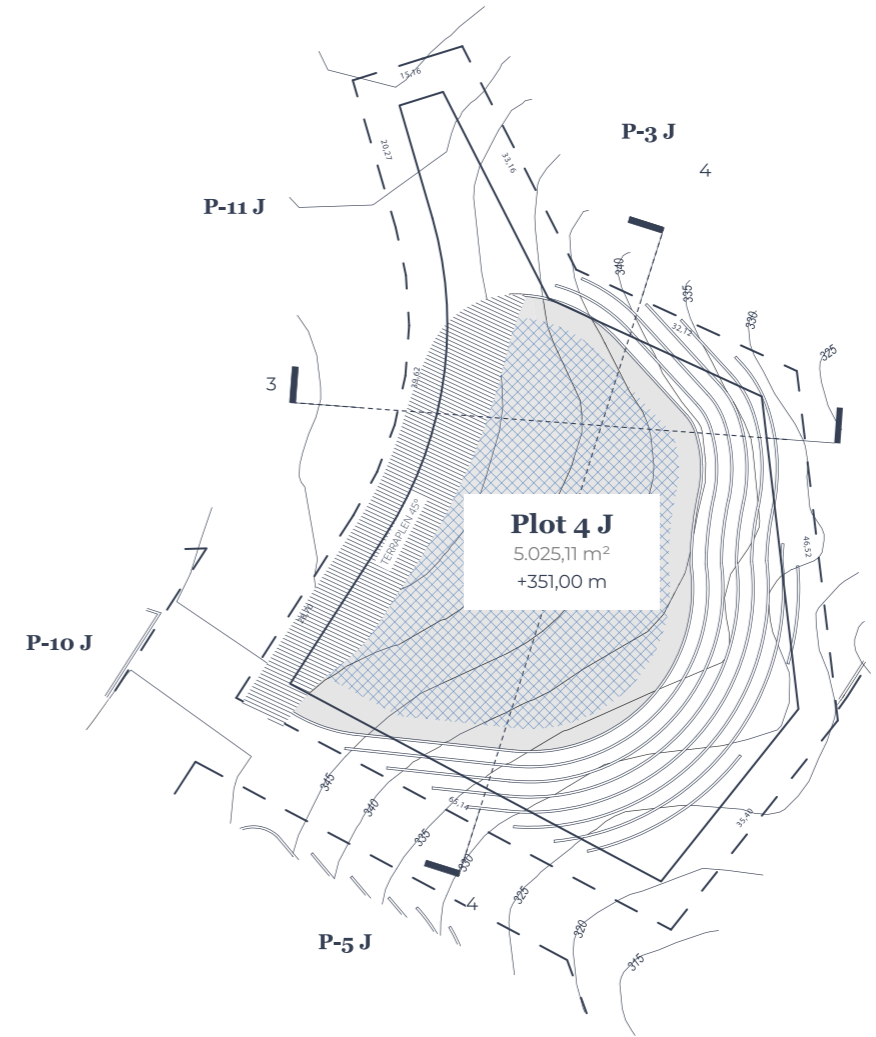
Scale: 1/1000

Legend in plan

- Platform
- Distance to plot boundary 5 sqm
- Topographic lines
- Property limit

Legend in section

- Current Topography



Plot J.09

La Zagaleta / J.09 (sector J)

Clasificación	Villa
Sector	Sector J.
Plot(m)	8.777
Buildable área(sqm)	1.316,55



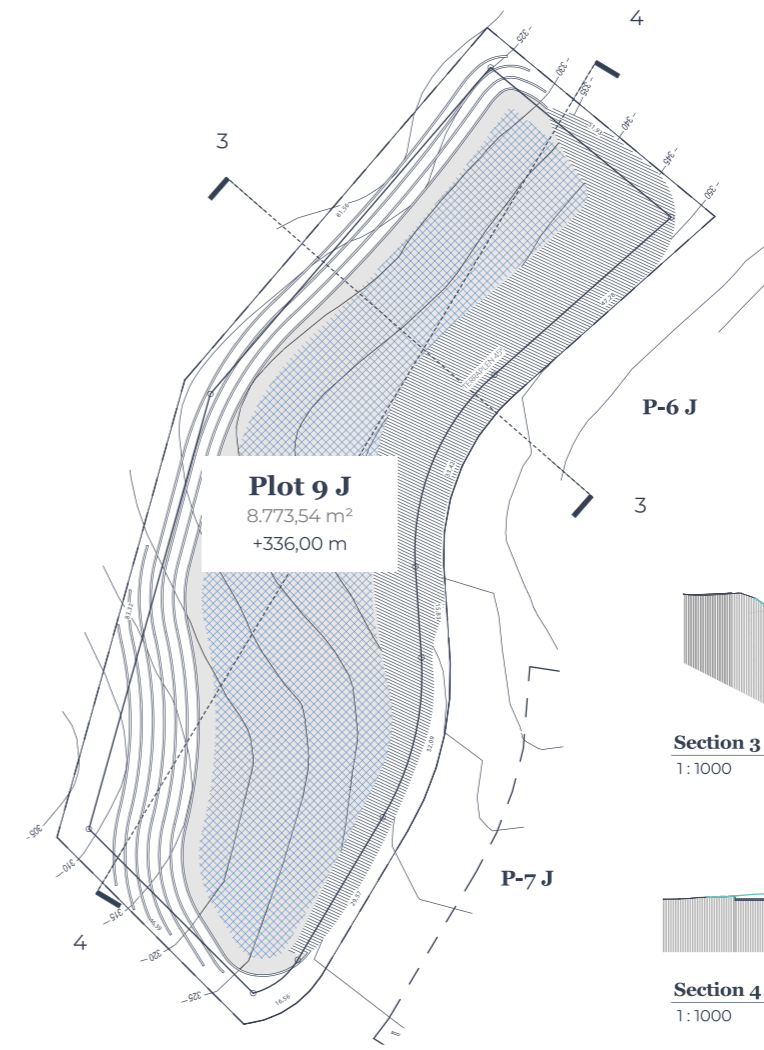
Scale: 1/1000

Legend in plan

- Platform
- Distance to plot boundary 5 sqm
- Topographic lines
- Property limit

Legend in section

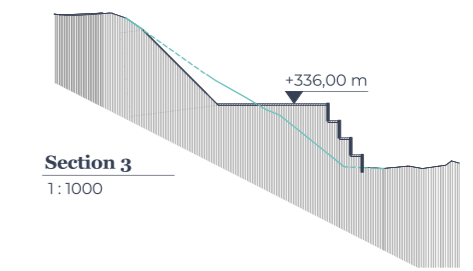
- Current Topography



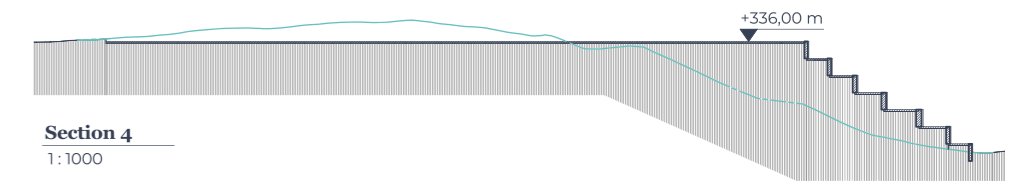
P-6 J

3

Section 3 1:1000



Section 4 1:1000



Plot J.10

La Zagaleta / J.10 (sector J)

Clasificación	Villa
Sector	Sector J.
Plot(m)	5.217
Buildable área(sqm)	782,55



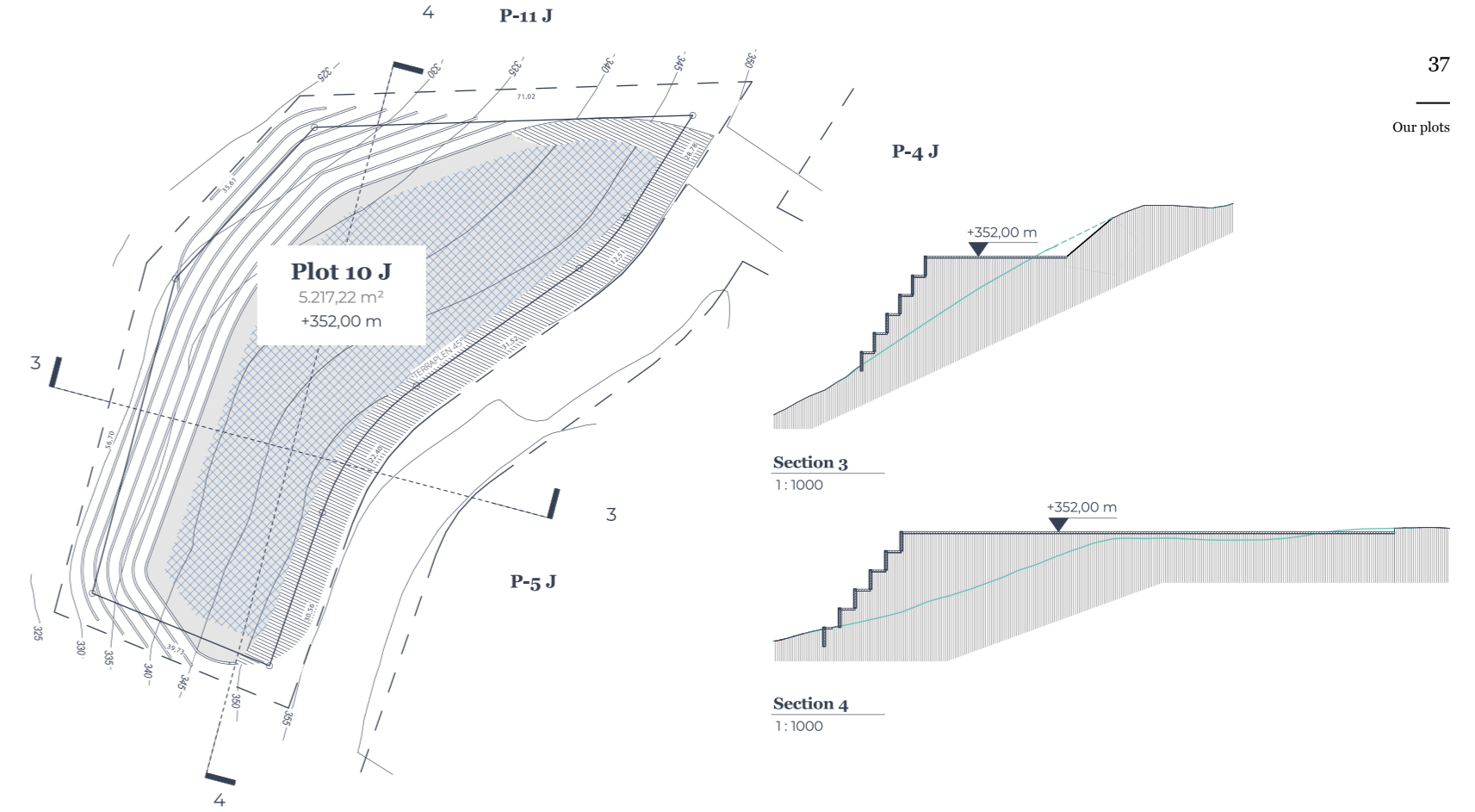
Scale: 1/1000

Legend in plan

- Platform
- Distance to plot boundary 5 sqm
- Topographic lines
- Property limit

Legend in section

- Current Topography



Plot J.33

La Zagaleta / J.33 (sector J)

Clasificación	Villa
Sector	Sector J.
Plot(m)	14.807
Buildable área(sqm)	2.221,05



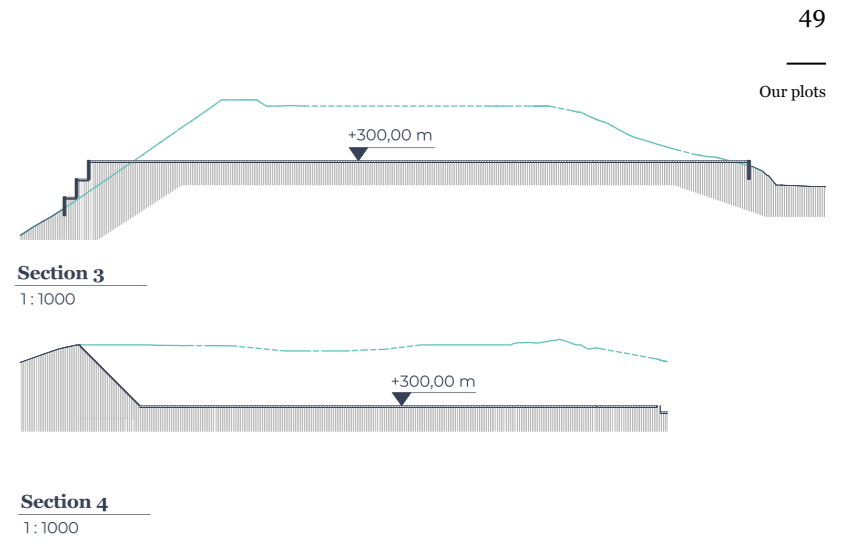
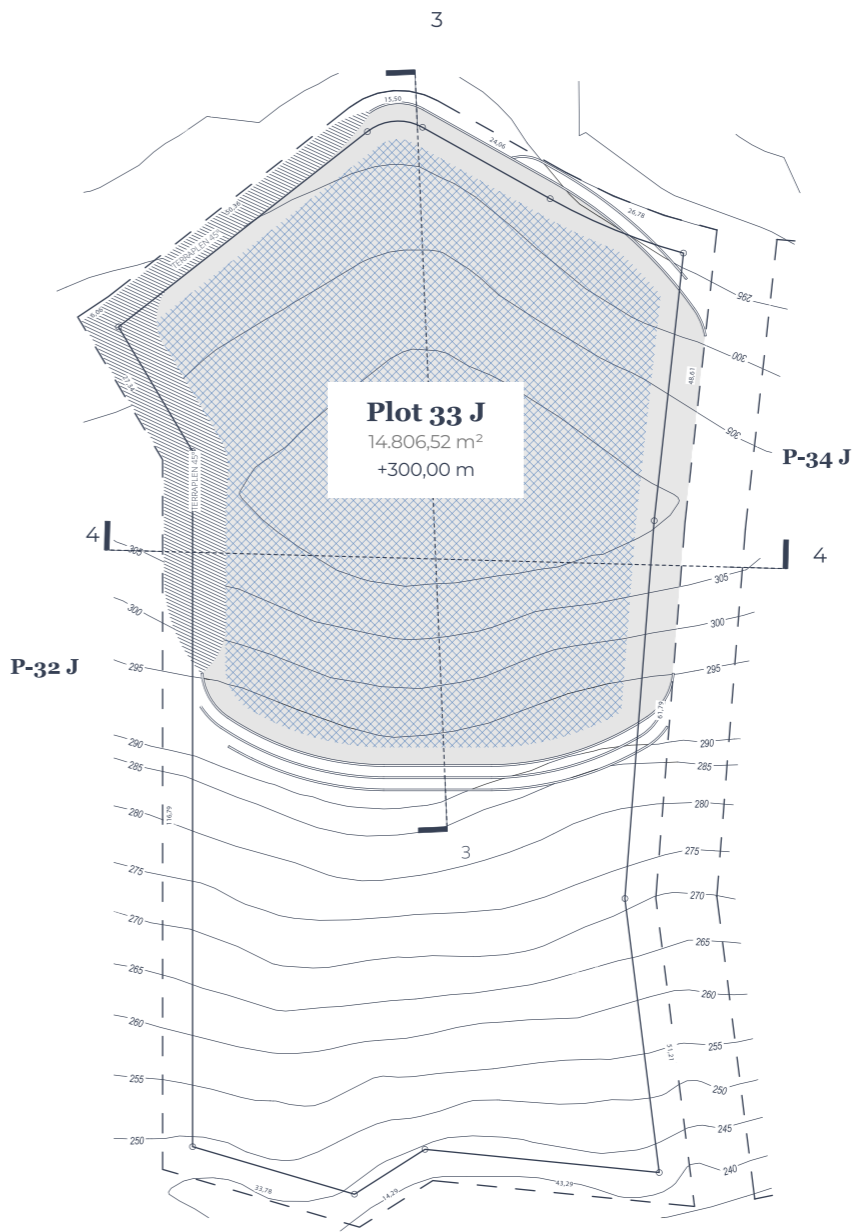
Scale: 1/1000

Legend in plan

- Platform
- Distance to plot boundary 5 sqm
- Topographic lines
- Property limit

Legend in section

- Current Topography



Plot J.34

La Zagaleta / J.34 (sector J)

Clasificación	Villa
Sector	Sector J.
Plot(m)	8.847
Buildable área(sqm)	1.327,05



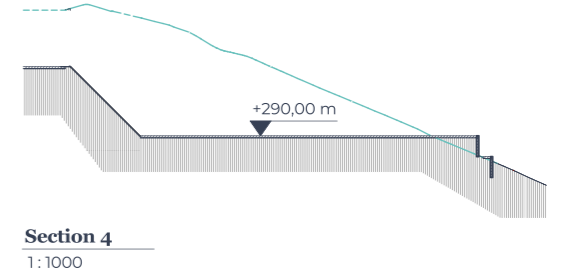
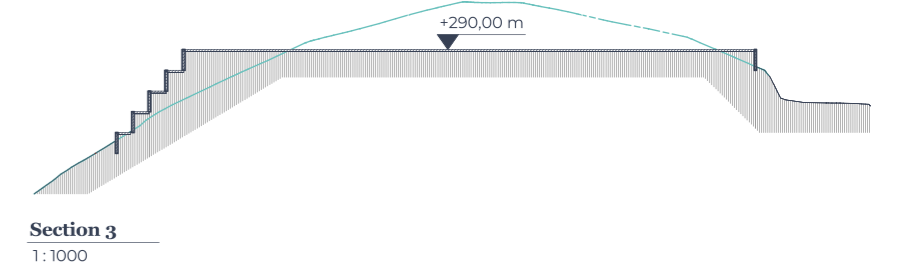
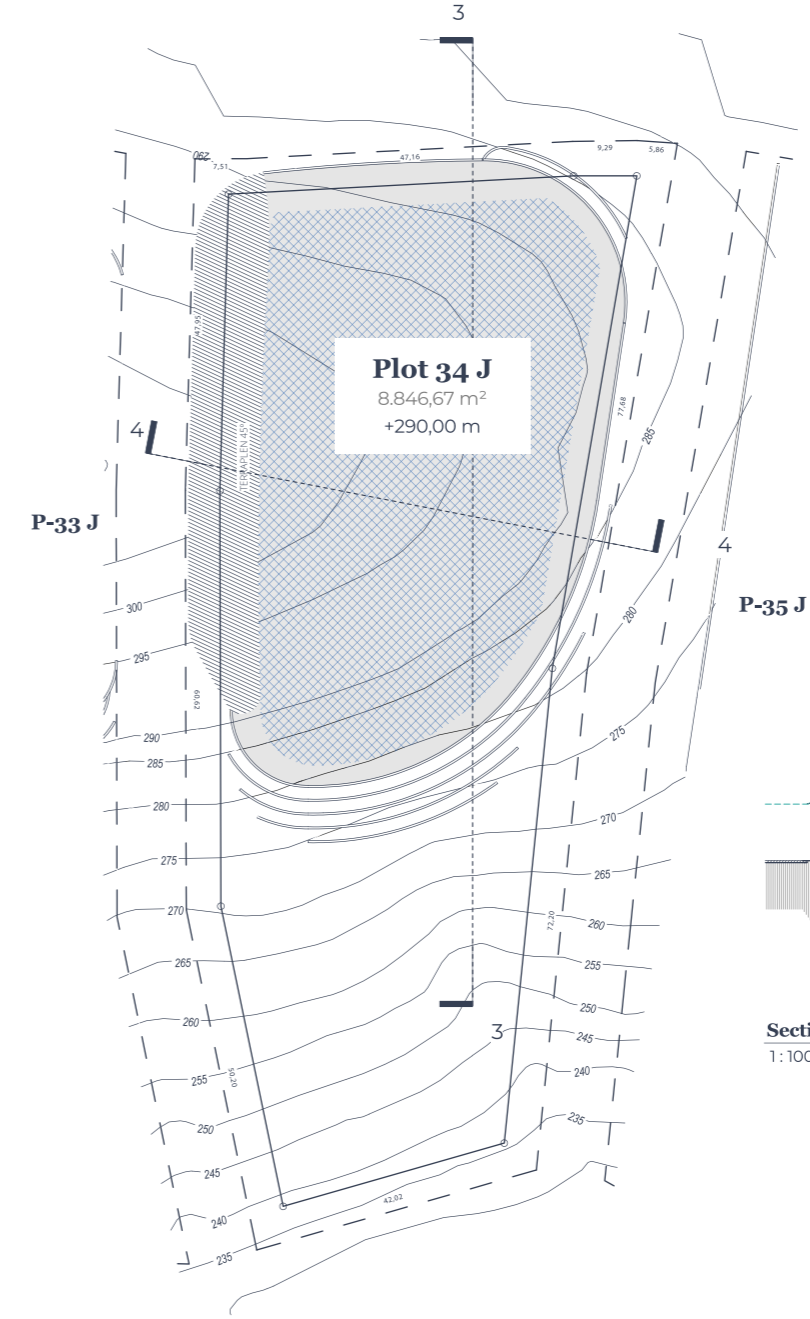
Scale: 1/1000

Legend in plan

- Platform
- Distance to plot boundary 5 sqm
- Topographic lines
- Property limit

Legend in section

- Current Topography



Plot J.35

La Zagaleta / J.35 (sector J)

Clasificación	Villa
Sector	Sector J.
Plot(m)	6.841
Buildable área(sqm)	1.026,15



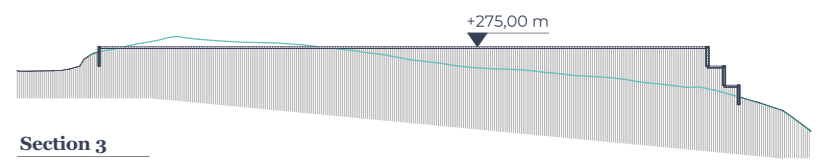
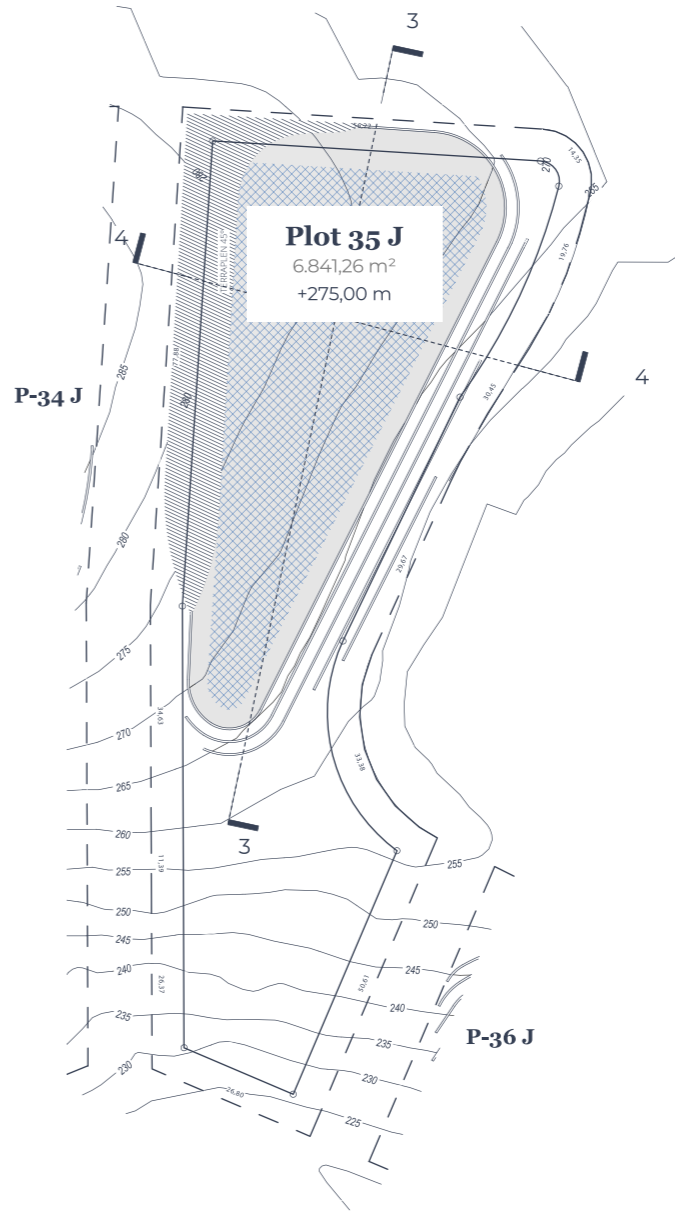
Scale: 1/1000

Legend in plan

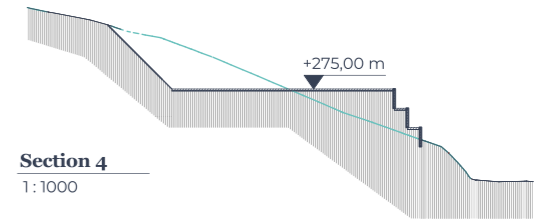
- Platform
- Distance to plot boundary 5 sqm
- Topographic lines
- Property limit

Legend in section

- Current Topography



Section 3
1:1000



Section 4
1:1000

Plot J.36

La Zagaleta / J.36 (sector J)

Clasificación	Villa
Sector	Sector J.
Plot(m)	7.459
Buildable área(sqm)	1.118,85



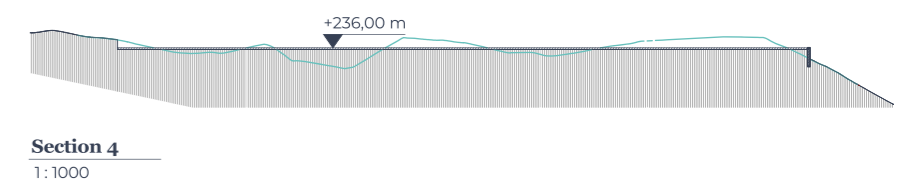
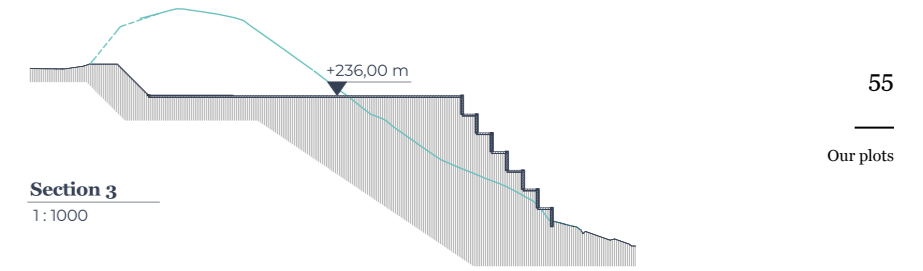
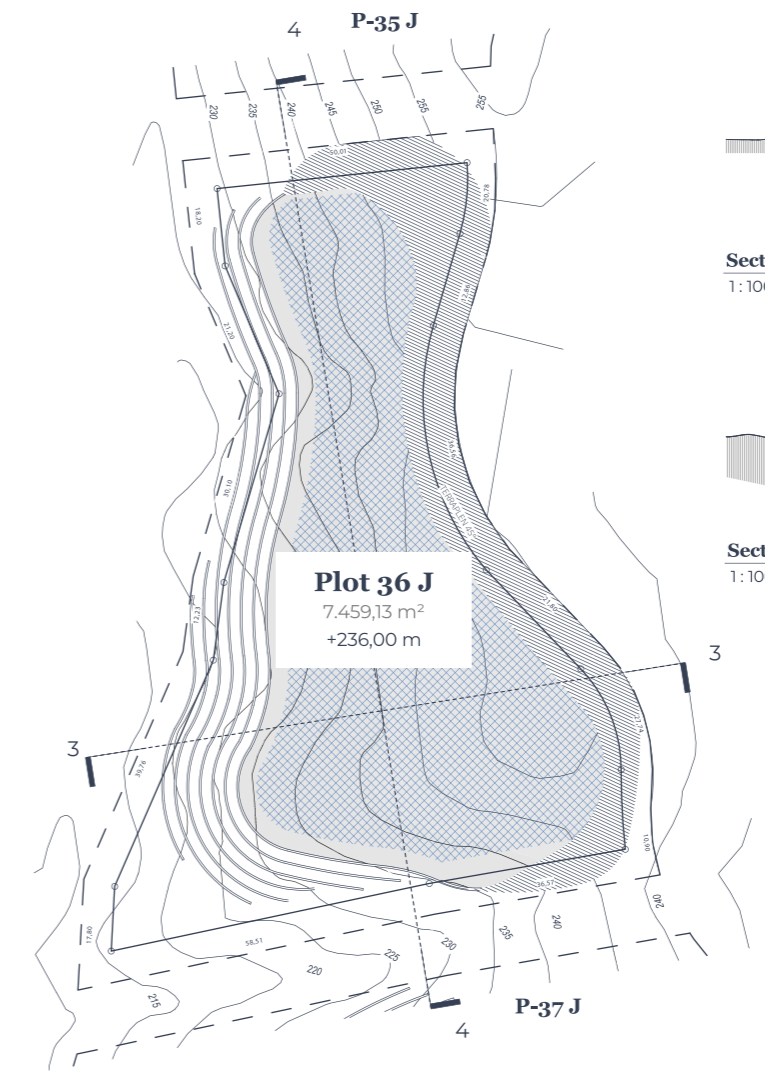
Scale: 1/1000

Legend in plan

- Platform
- Distance to plot boundary 5 sqm
- Topographic lines
- Property limit

Legend in section

- Current Topography



55

Our plots

Plot J.37

La Zagaleta / J.37 (sector J)

Clasificación	Villa
Sector	Sector J.
Plot(m)	8.871
Buildable área(sqm)	1.330,65



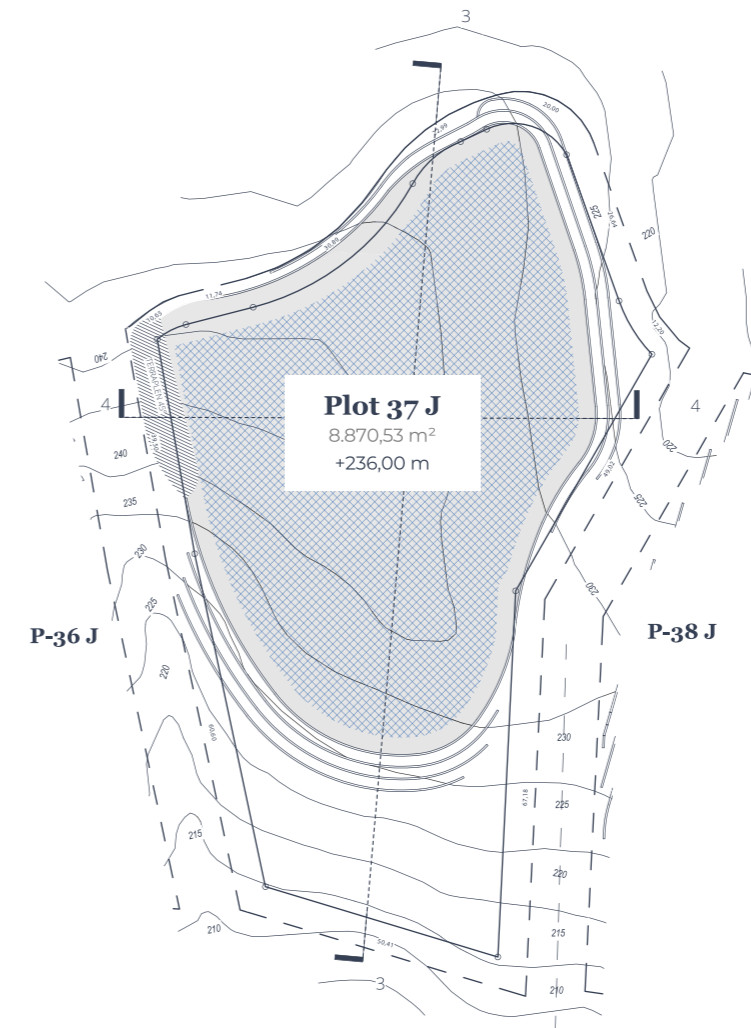
Scale: 1/1000

Legend in plan

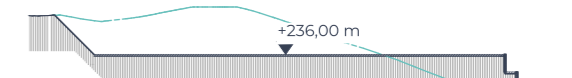
- Platform
- Distance to plot boundary 5 sqm
- Topographic lines
- Property limit

Legend in section

- Current Topography



Section 3
1:1000



Section 4
1:1000



Plot J.38

La Zagaleta / J.38 (sector J)

Clasificación	Villa
Sector	Sector J.
Plot(m)	9.101
Buildable área(sqm)	1.365,15



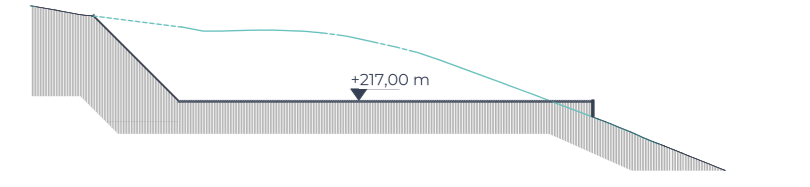
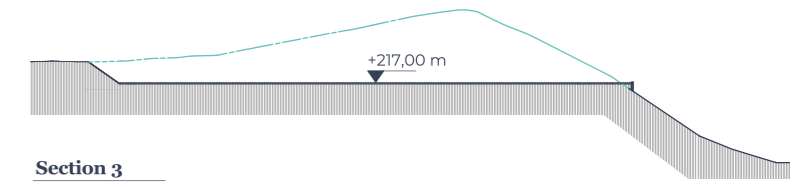
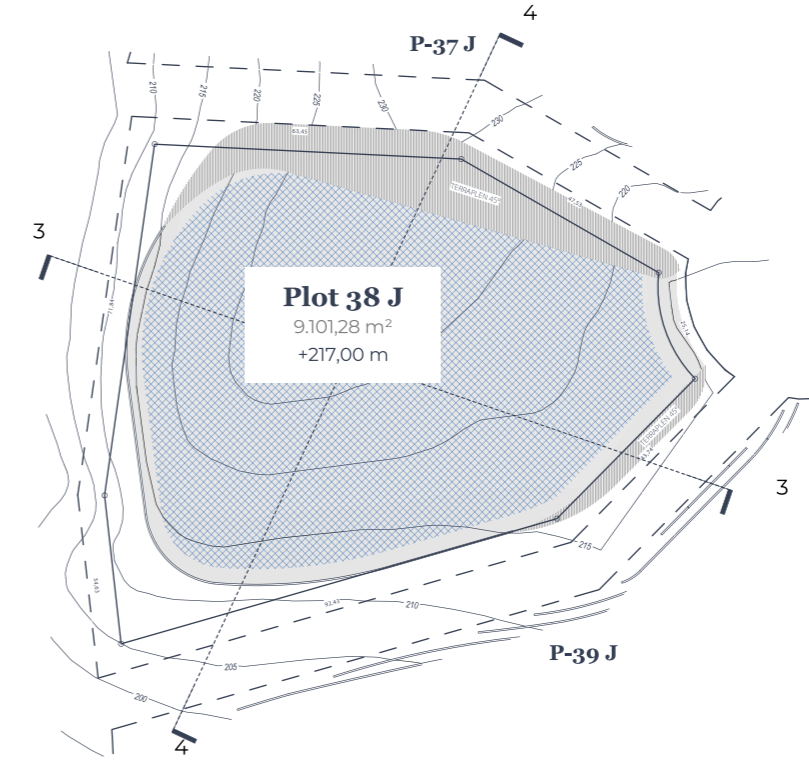
Scale: 1/1000

Legend in plan

- Platform
- Distance to plot boundary 5 sqm
- Topographic lines
- Property limit

Legend in section

- Current Topography



Plot J.39

La Zagaleta / J.39 (sector J)

Clasificación	Villa
Sector	Sector J.
Plot(m)	9.370
Buildable área(sqm)	1.405,5



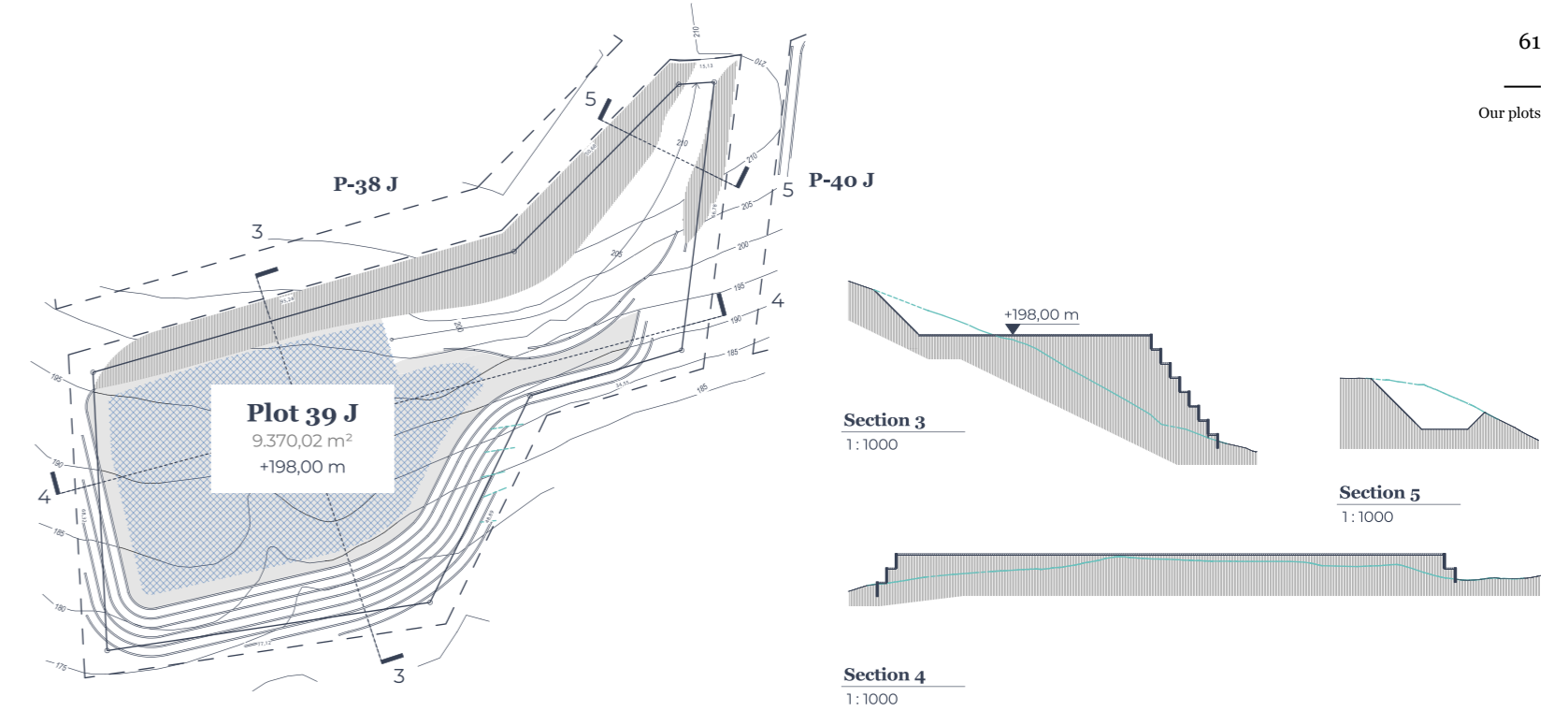
Scale: 1/1000

Legend in plan

- Platform
- Distance to plot boundary 5 sqm
- Topographic lines
- Property limit

Legend in section

- Current Topography



Plot J.40

La Zagaleta / J.40 (sector J)

Clasificación	Villa
Sector	Sector J.
Plot(m)	5.020
Buildable área(sqm)	753



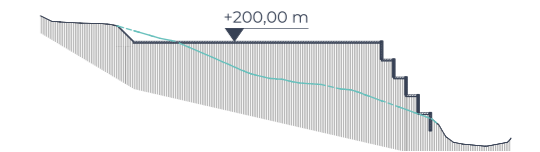
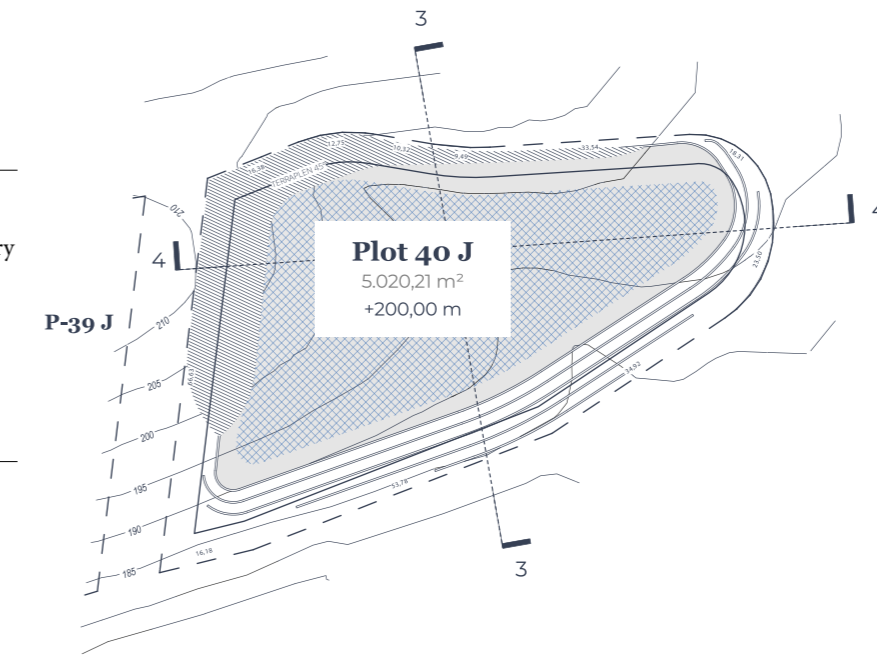
Scale: 1/1000

Legend in plan

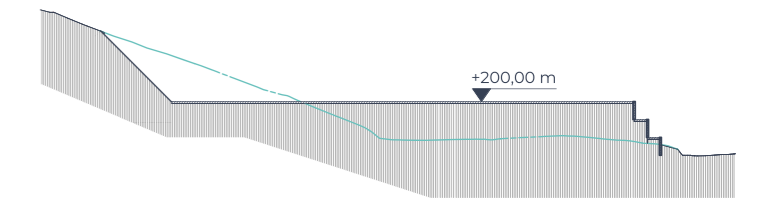
- Platform
- Distance to plot boundary 5 sqm
- Topographic lines
- Property limit

Legend in section

- Current Topography



Section 3
1:1000



Section 4
1:1000

A panoramic view of a lush, hilly landscape. In the foreground, there are green pine trees. The middle ground features a winding golf course with green fairways and sand traps. A large, modern villa with a light-colored facade and a tiled roof is situated on a hillside, surrounded by terraced gardens. In the background, more hills rise, with a small cluster of white buildings visible on a higher ridge. The sky is clear and blue.

Villa Capriccio

The Secret Refuge



Villa Capriccio

Finished project

5,312 sq.m

Surface

1,836 sq.m

Built

336 sq.m

Terraces & porches

Southeast

Orientation

Golf
and valley

Views

5,312 sq.m

to inspire you

This incredible villa stands on the 10th hole of the New Golf Course in one of La Zagaleta's most privileged valleys, surrounded by lush foliage and mountains. Designed for your pleasure, it will fill you with energy from the extraordinary light that pours in through large windows. One of the most distinguishing features is the high ceiling that turns the centre of Villa Capriccio into a lounge, bathed in natural light.



Villa Ibiza Breeze

The Secret Refuge





Villa Ibiza Breeze

Finished project

8,612 sq.m

Surface

2,515 sq.m

Built

566 sq.m

Terraces & porches

South

Orientation

Sea, golf
and valley

Views

8,612 sq.m

of land and nature

Situated on a dominating hillside with impressive views, contemporary lines give Villa Ibiza its unique character, creating a new paradigm for exclusive homes. Designed for your enjoyment, it is filled with light, views and a sweeping sense of space. Extensive gardens surround the house, framing views of the sea, the golf course and mountains, as well as the leafy green valley of La Zagaleta.



Luxury with all the guarantees.

We are a property development company exclusively
dedicated to create and build up housing projects
of both first and second homes.

